

# CrystalVue™

## V Series Quick Guide



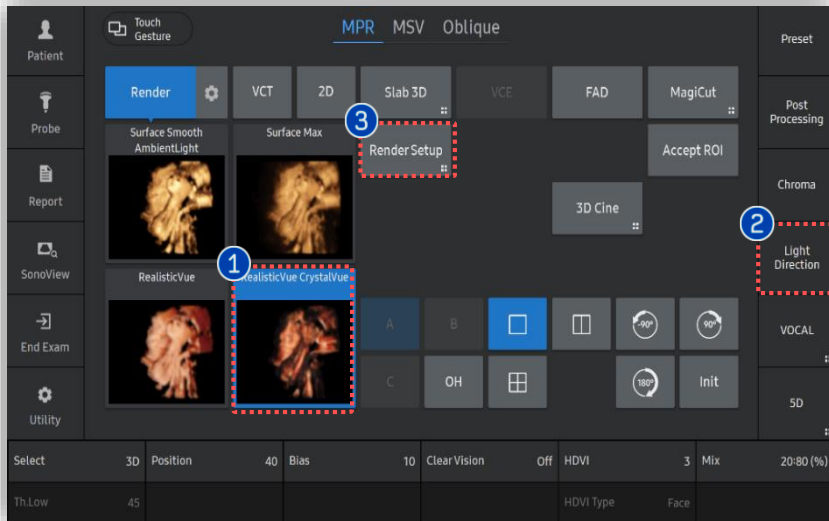
# 1. Volume Acquisition



## ① Volume acquisition

Acquire the volume data with the structure you desire to apply CrystalVue™.

# 2. Apply CrystalVue™



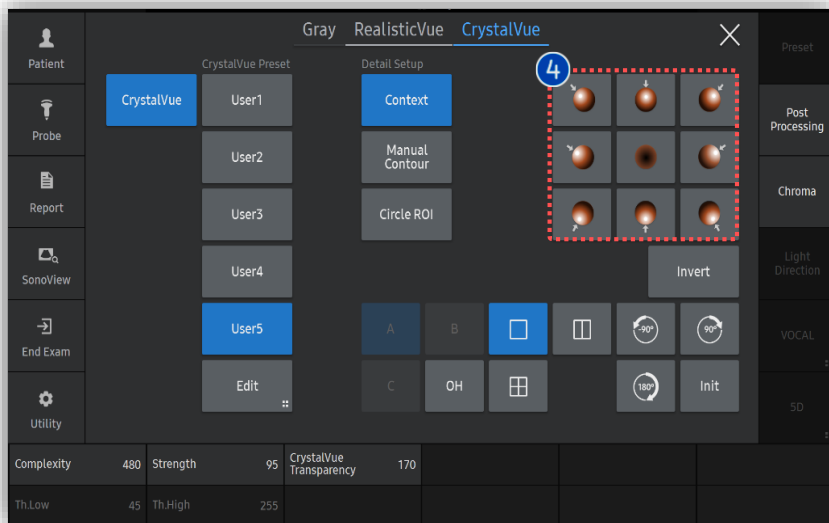
- 1 CrystalVue™

Tap [CrystalVue] on the touch screen.
- 2 Light Direction

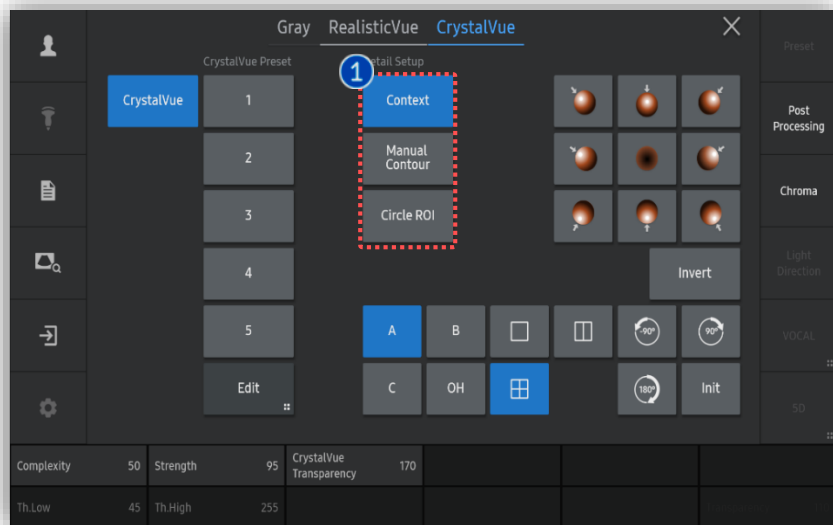
Tap [Light Direction] within short cut keys when you adjust the direction of light freely by trackball.
- 3 Render Setup

Tap [Render Setup] on the touch screen to adjust parameters of CrystalVue.
- 4 Pre-defined Light direction

Tap pre-defined light direction among 9 designated options.



# 3. Adjust CrystalVue™ parameters

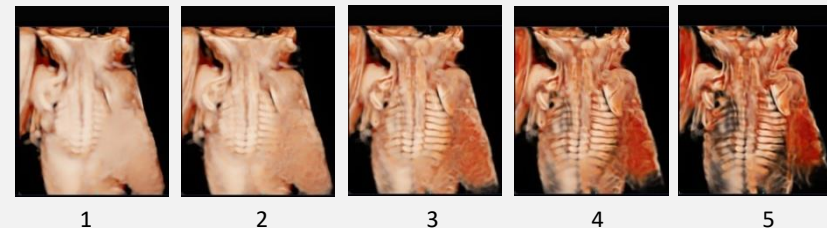
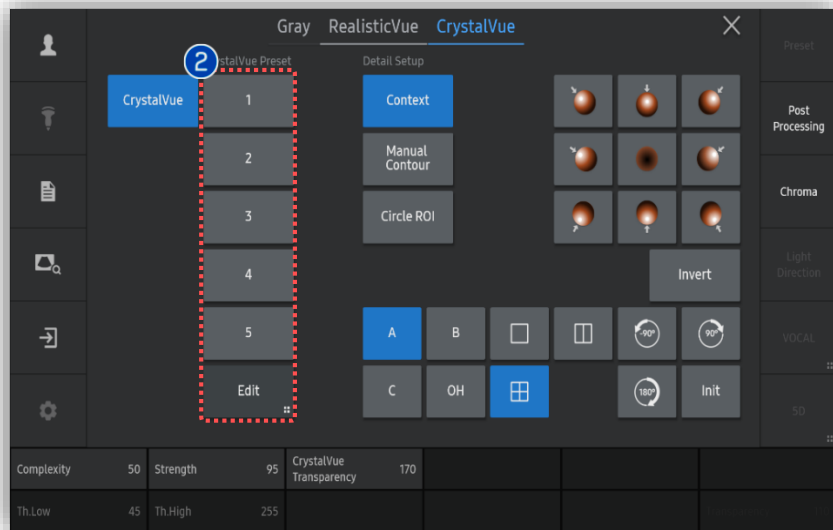


- 1 ROI Type

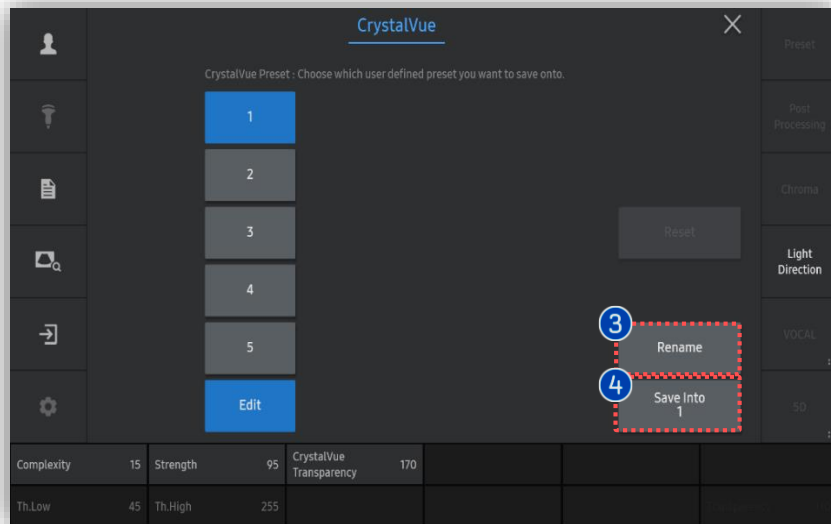
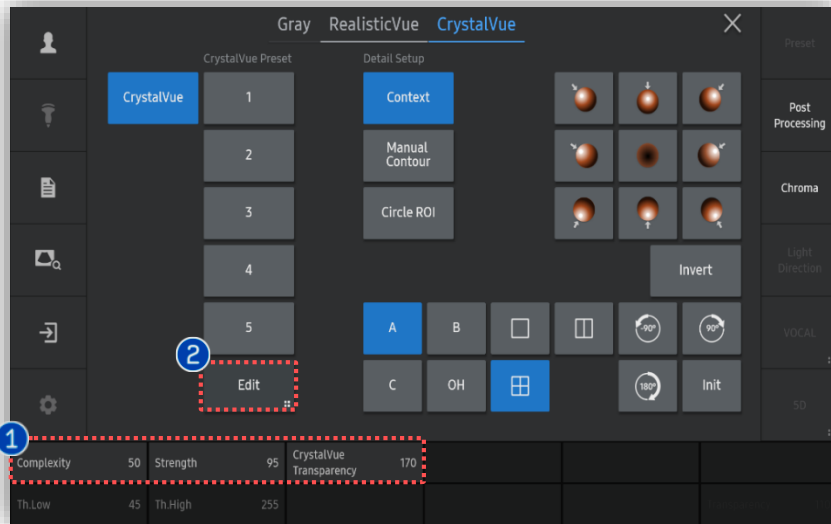
Select type of ROI between **Context**, **Manual Contour** and **Circle ROI**.
- 2 CrystalVue™ Preset

Select one among various pre-defined presets for quick feedback.

  - The higher the preset number, the more internal information



# 4. Edit CrystalVue™ preset



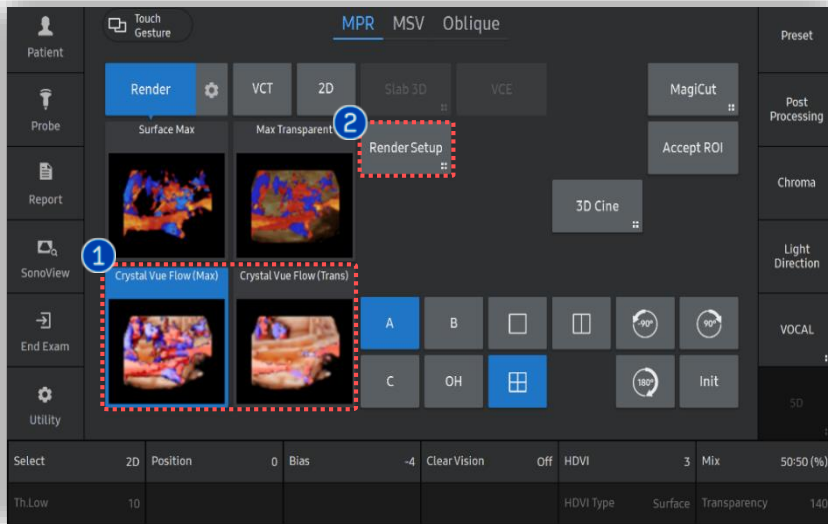
<p>① CrystalVue™ Parameters</p>	<p>For fine adjustment, use these three parameters.</p> <ul style="list-style-type: none"> <li>▪ <b>Complexity:</b> The higher Complexity value, the more context information. The lower value, the more surface information.</li> <li>▪ <b>Strength:</b> As the Strength value is higher, the context information becomes clearly visible.</li> <li>▪ <b>Transparency:</b> Level of transparency or opacity.</li> </ul>
<p>② Edit</p>	<p>After parameter adjustment, tap [Edit] to save it.</p>
<p>③ Rename</p>	<p>Tap to designate name of the preset.</p>
<p>④ Save Into</p>	<p>Tap to save into selected preset.</p>

# CrystalVue Flow™

## V Series Quick Guide



# 1. Apply CrystalVue Flow™



Acquire Volume image with Doppler method such as Color, Power and S-Flow.

① CrystalVue Flow

After acquisition, tap [Crystalvue Flow].

② Render Setup

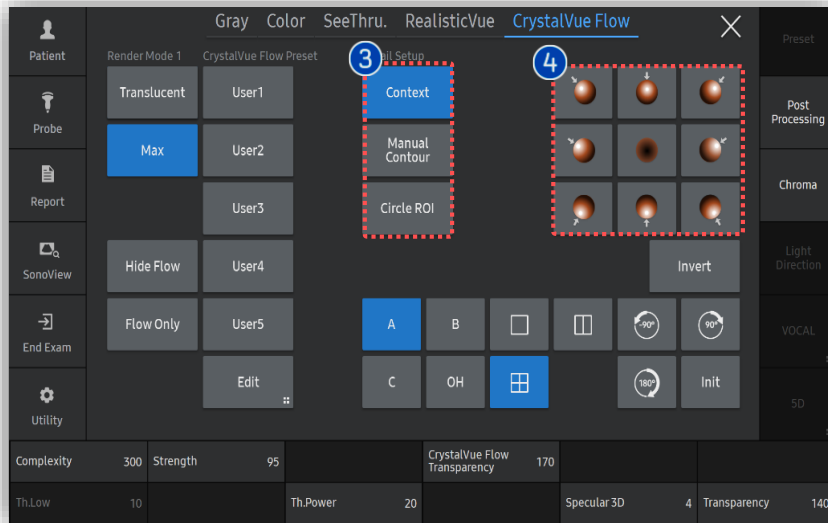
Tap [Render Setup] to adjust parameters of CrystalVue Flow.

③ ROI Type

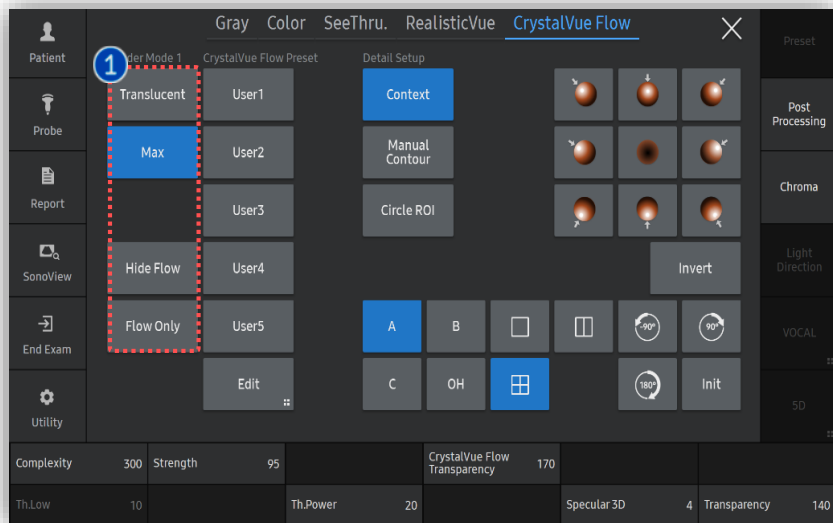
Select type of ROI between Context, Manual Contour and Circle ROI.

④ Pre-defined Light Direction

Tap pre-defined light direction among 9 designated options.



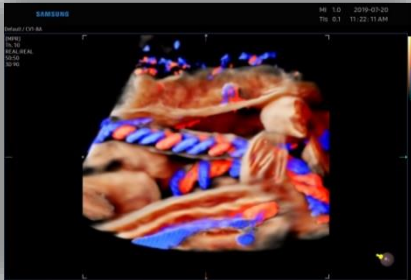
## 2. Apply CrystalVue Flow™



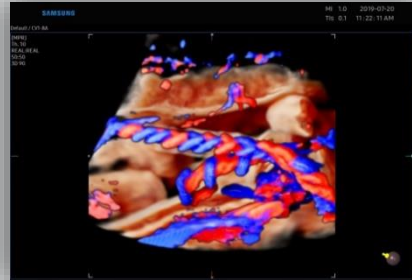
### 1 Display Mode

You can select display mode among various options below.

- **Translucent:** Color signal will be represented within tissue signal
- **Max:** Color signal will be represented in maximum intensity
- **Hide Flow:** Only tissue signal will be represented
- **Flow Only:** Only Doppler signal will be represented



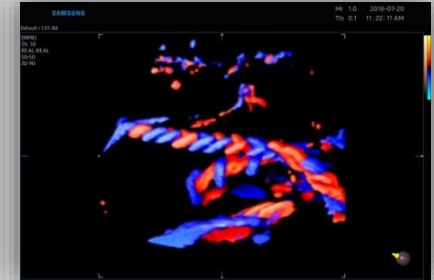
Translucent



Max

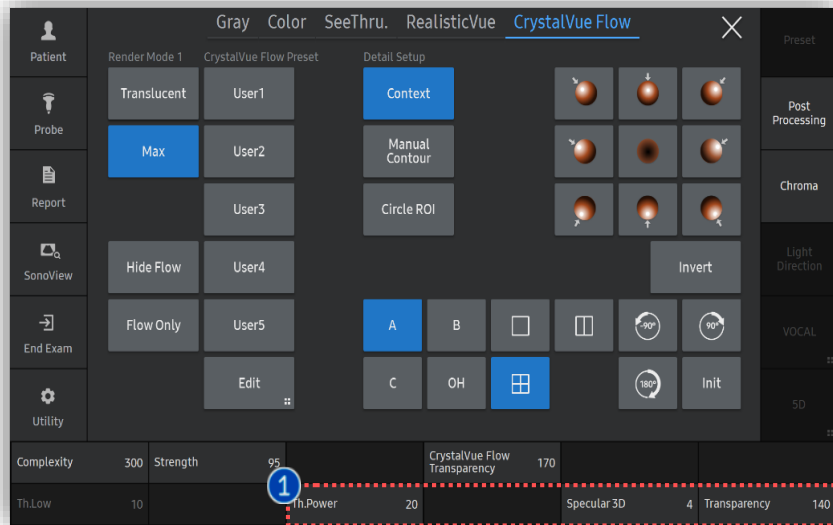


Hide Flow



Flow Only

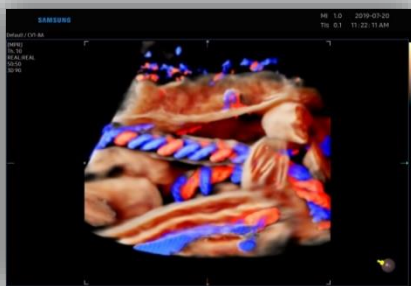
# 3. Adjust the Color Parameters



## 1 Color Parameters

You can adjust parameters of Color signal.

- **Th.Power:** As Th.Power increases, overall color signal will be gradually eliminated
- **Specular 3D:** As the index increases, there are more watery effect applied
- **Transparency:** The lowest value(20) is for transparent color signal, and the highest value(250) is for opaque color signal.



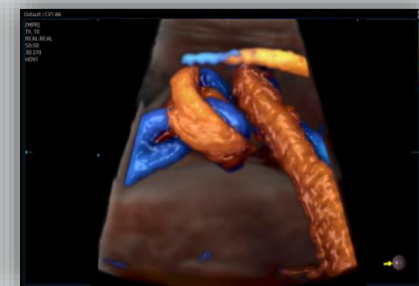
Th.Power 0



Th.Power 250

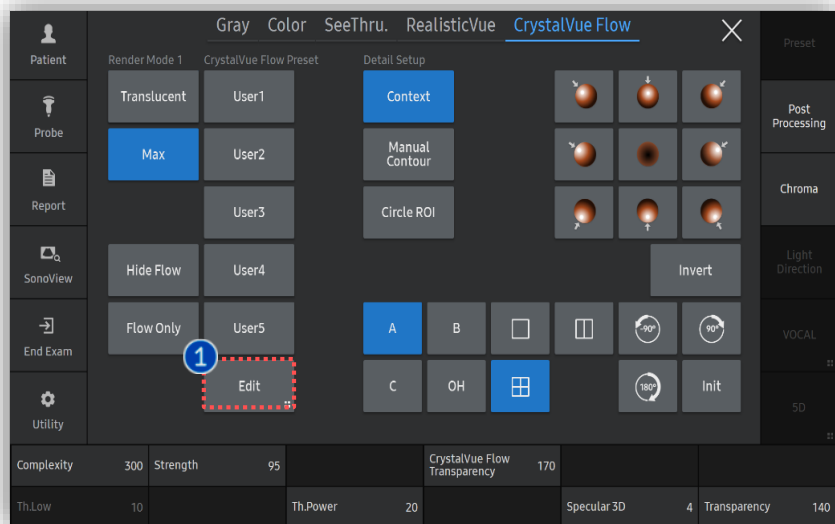


Specular 3D Off

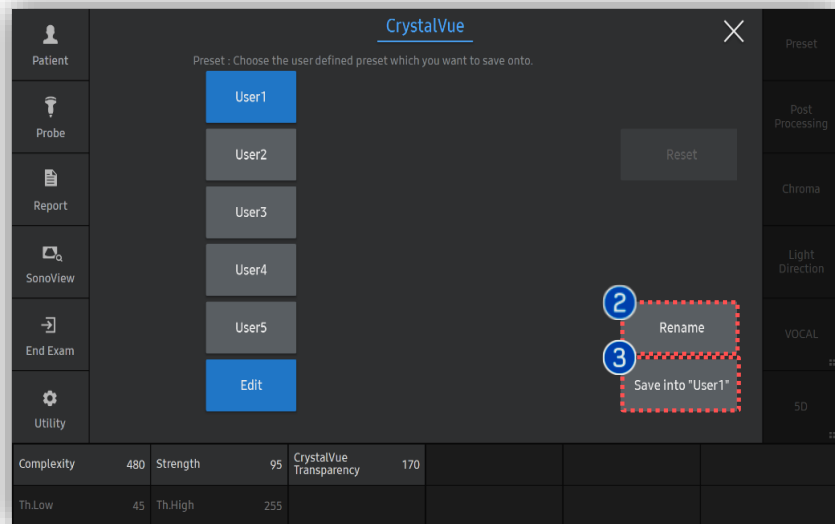


Specular 3D Lv.5

# 4. Edit CrystalVue Flow™ Preset



- |             |  |
|-------------|--|
| 1 Edit      | After parameter adjustment, tap [Edit] to save it. |
| 2 Rename    | Tap to designate name of the preset.               |
| 3 Save Into | Tap to save into selected preset.                  |



- The features, options may not be commercially available in some countries.
- Sales and shipments are effective only after the approval by the regulatory affairs. Please contact your local sales representative for further details.
- This Quick guide does not include all of the details of instruction, for more detail, please refer to V series User Manual.
- Do not distribute this document to customers unless relevant regulatory and legal affairs officers approve such distribution.
- This User Quick Guide is based on V series V1.05.
- Disclaimer: Some Images in this content were obtained from other system.

**SAMSUNG MEDISON CO., LTD.**

© 2024 Samsung Medison All Rights Reserved.

Samsung Medison reserves the right to modify the design, packaging, specifications, and features shown herein, without prior notice or obligation.