

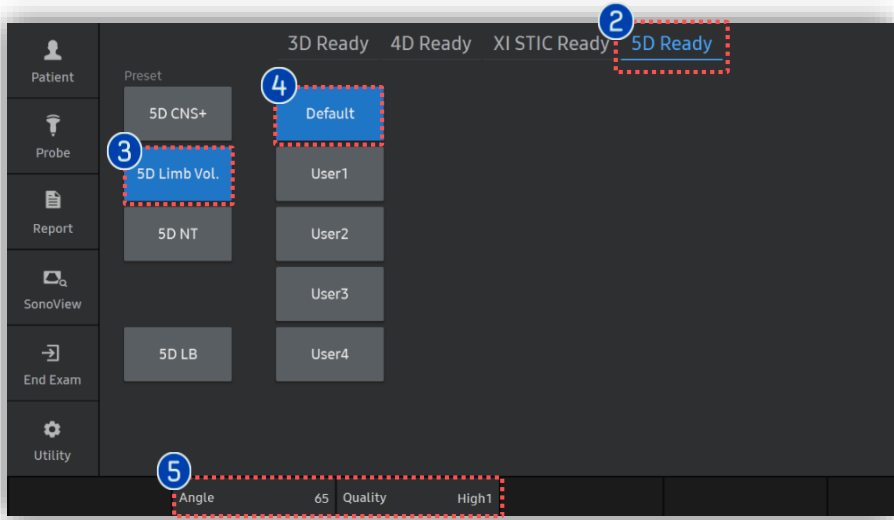
# 5D Limb Vol™

## V Series Quick Guide

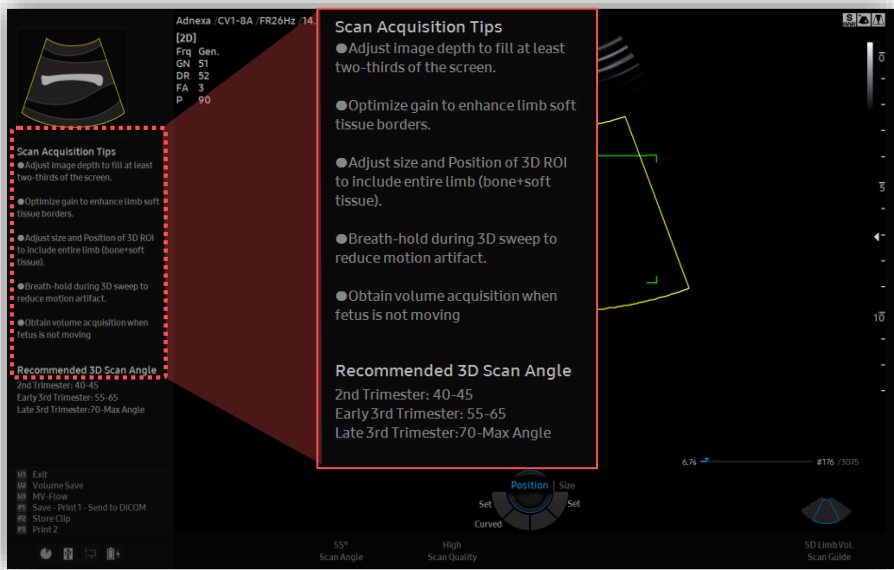


5D Limb Vol.™

# 1. Activate 5D Limb Vol.™ (Before 3D Acquisition)



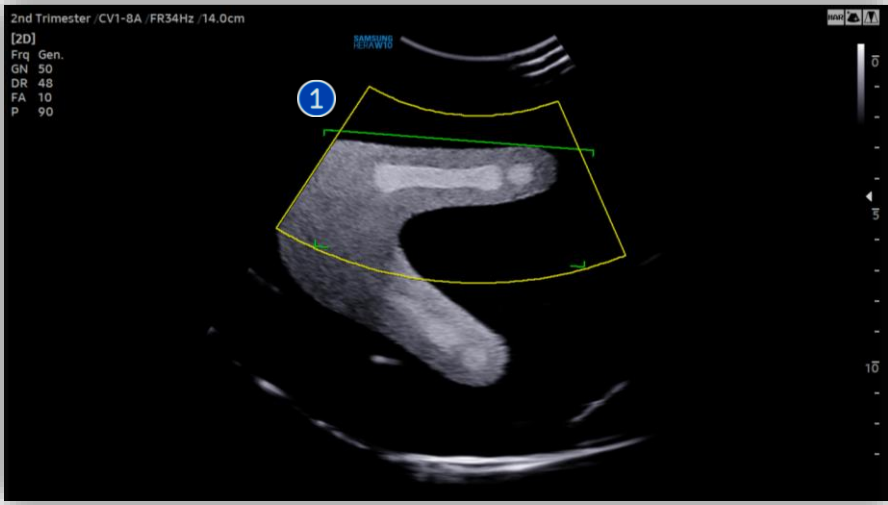
1	3D Button	Press [3D] button on the control panel.
2	5D Ready	Tap [5D Ready] to activate 5d features.
3	5D Limb Vol.	Tap [Limb Vol.] to activate 5D Limb Vol.™
4	Preset	Select preferred preset between default and users. Each 5D feature could have own preset parameters.
5	Parameters	3D [Scan Angle] and [Scan Quality] are customizable. ✓ <a href="#">Recommended 3D scan angle</a> <ul style="list-style-type: none"> <li>• 2<sup>nd</sup> Trimester : 40-45</li> <li>• Early 3<sup>rd</sup> Trimester : 55-65</li> <li>• Late 3<sup>rd</sup> trimester : 70-Max Angle</li> </ul>



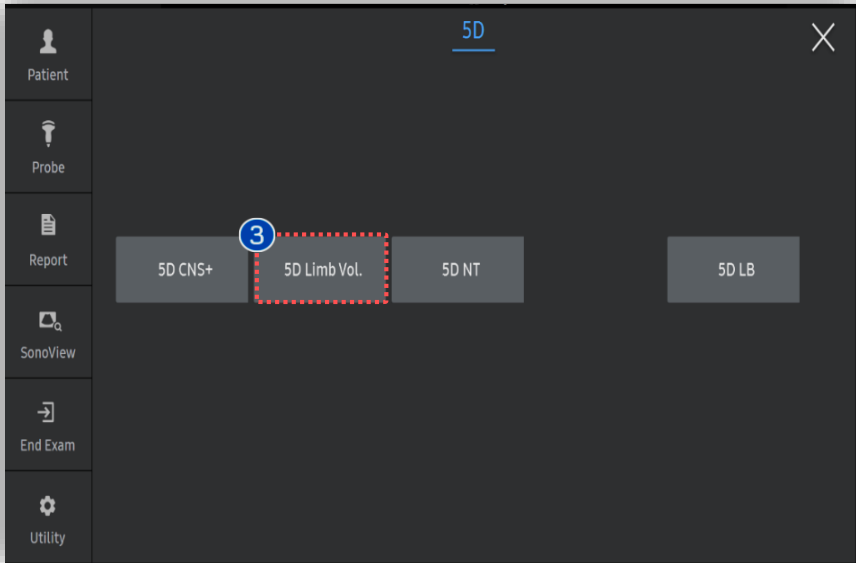
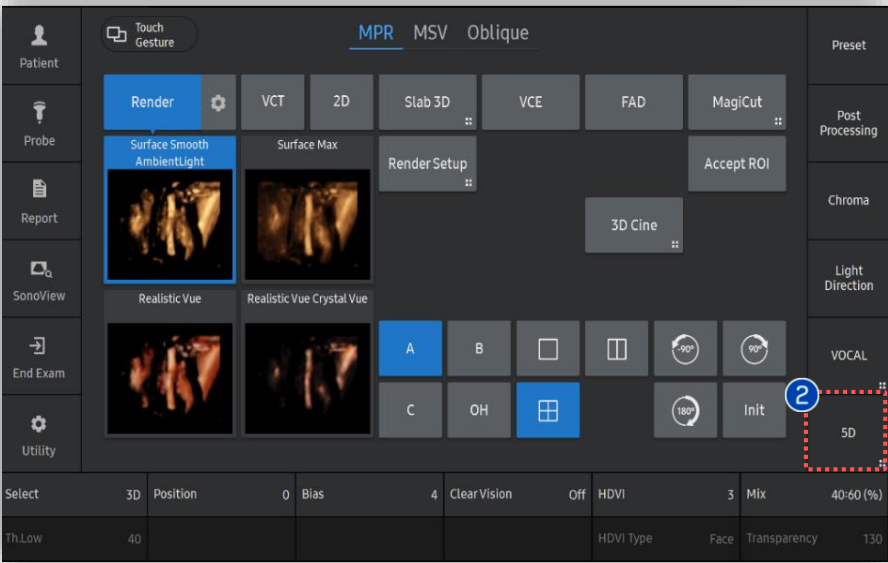
6	Scan Acquisition Tips	Before 3D acquisition, refer to the '5D Limb. Vol. Guide' on the left top. ✓ <a href="#">Scan Acquisition Tips</a> <ul style="list-style-type: none"> <li>• Adjust image depth to fill at least two-thirds of the screen.</li> <li>• Optimize gain to enhance limb soft tissue borders.</li> <li>• Adjust size and position of 3D ROI to include entire limb (bone + soft tissue).</li> <li>• Breath - hold during 3D sweep to reduce motion artifact.</li> <li>• Obtain volume acquisition when fetus is not moving.</li> </ul>
---	-----------------------	--

5D Limb Vol.™

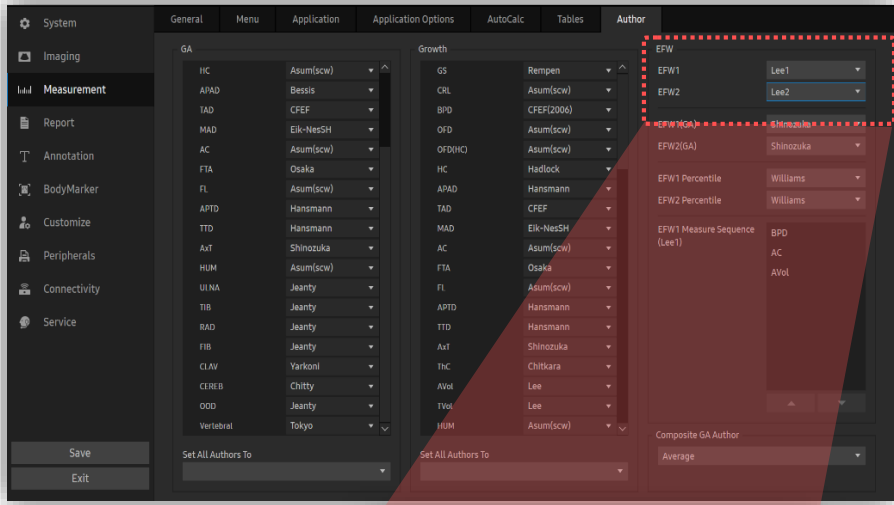
# 2. Activate 5D Limb Vol.™ (After 3D Acquisition)



1	Volume acquisition	Find long bone structures such as femur, tibia, fibular, humerus, radius and ulna.
2	5D	Tab to activate [5D] features.
3	5D Limb Vol.	Tab the [Limb Vol.] to activate it.



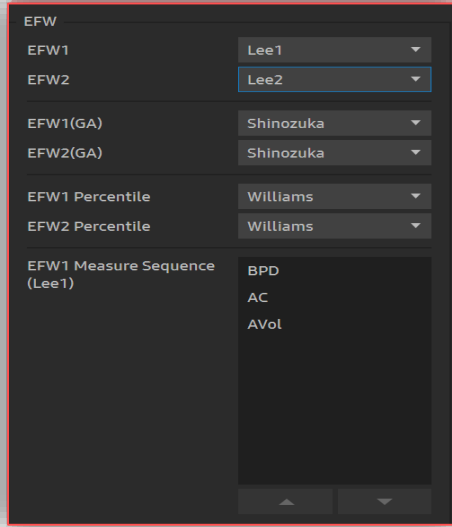
# 3. Assign table



1 5D Button

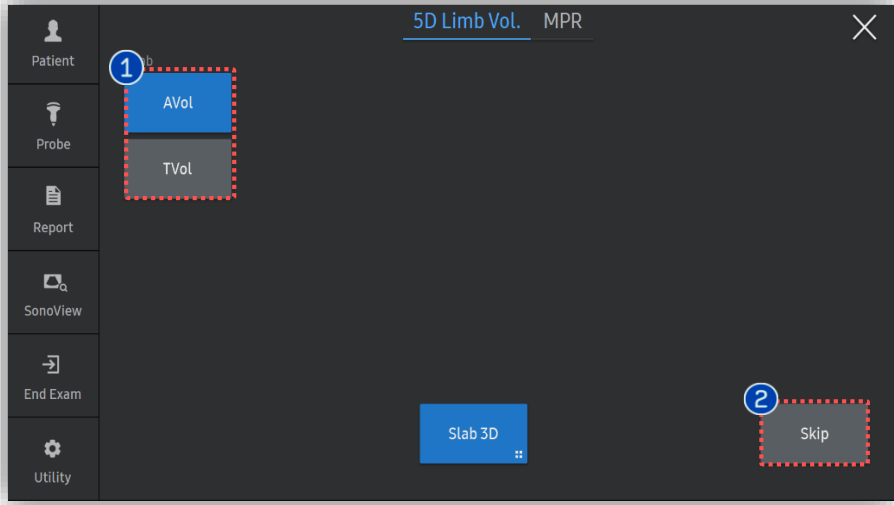
Go to [Measurement], assign 'Lee1 or Lee2' EFW table.  
(Measurement > Author > EFW)

*\* Lee1 : A Vol. / Lee2 : T Vol.*

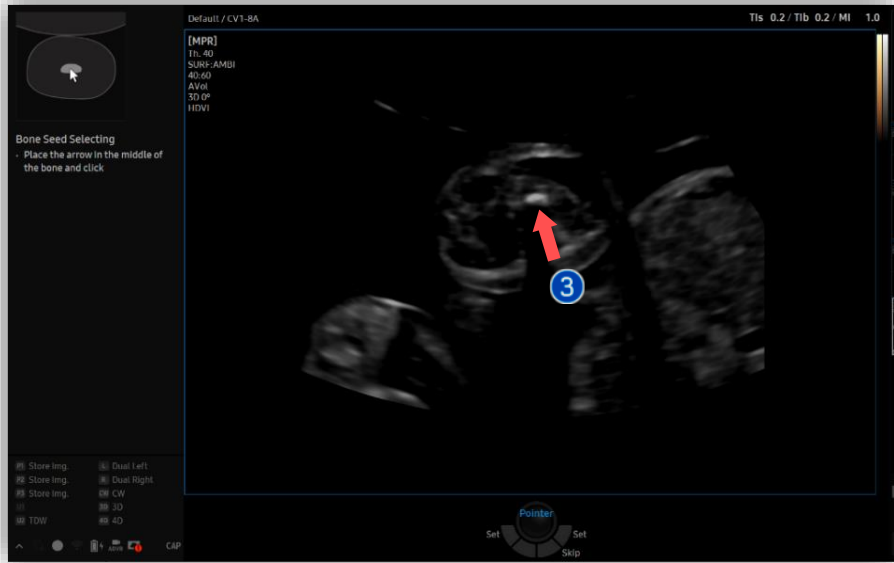


5D Limb Vol.™

# 4. Bone Editing

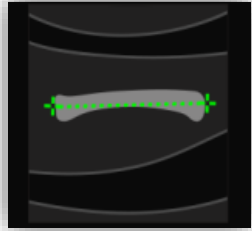
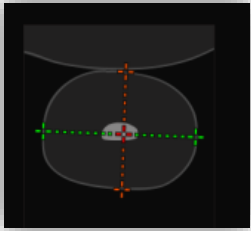


① Limb Type	Select limb type between arm (AVol) or leg (TVol).
② Skip	To Skip [Bone Editing] process, tap [Skip].
③ Bone Editing (Optional)	If you do not skip [Bone Editing], place the arrow on the middle of bone and [Set].

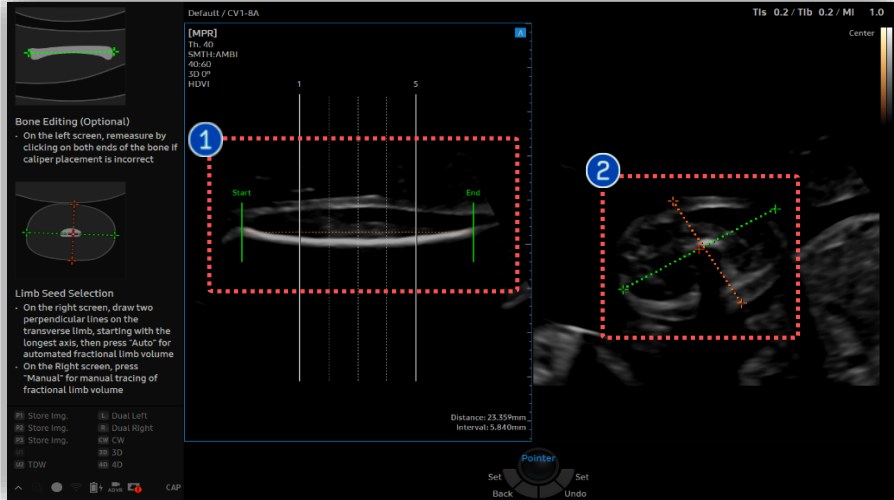


★ Tips

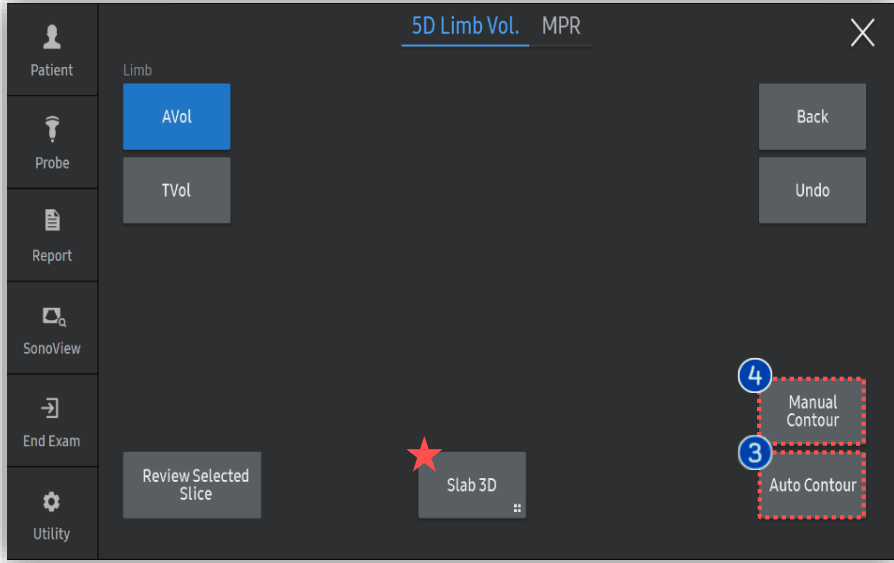
In case of using [Skip] on this progress, next two step which is [Bone Editing] and [Limb Seed Selecting] should be done for more accurate result.

# 6. Bone Editing and Limb Seed



<p>1 Bone Editing</p>	<p>Re-measure by clicking on the both ends of the bone if auto caliper placement is incorrect.</p>
<p>2 Limb Seed</p>	<p>Draw two perpendicular lines on the transverse limb, starting with the longest axis, then press [Auto Contour] or [Manual Contour].</p>
<p>3 Auto Contour</p>	<p>Locate and measure the volume of fetal limbs automatically.</p>
<p>4 Manual Contour</p>	<p>Locate and measure the volume of fetal limbs manually by using contour tool.</p>

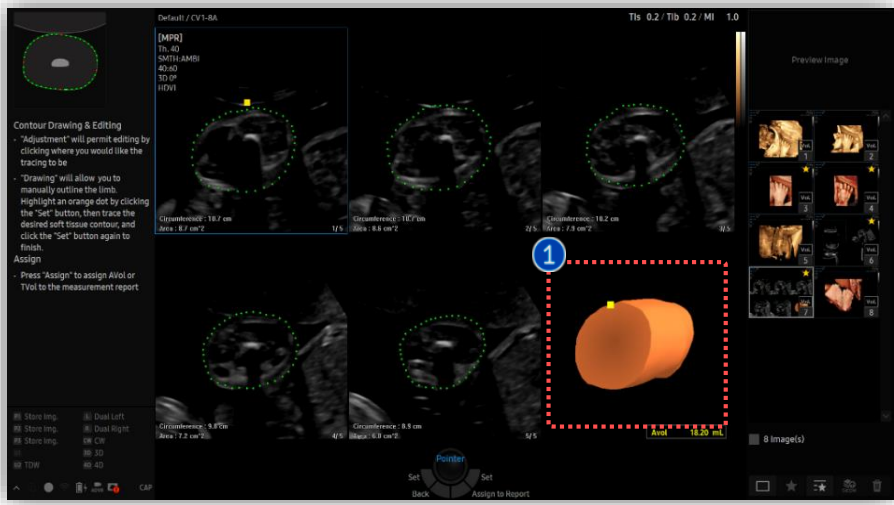


★ Tips

Slices of a 3D image will be displayed as images rendered in 3D. You may select [Slab 3D Type] among Surface, X-ray, Max and Min.

5D Limb Vol.™

# 7. Result and Edit



<p>1 Result</p>	<p>3D rendered limb image and volume data will be provided at the bottom right.</p>
<p>2 Edit Type</p>	<p>When edit is needed select proper type of edit among Adjustment, Redrawing and Revert Adjustment.</p>
<p>3 Assign to Report</p>	<p>Tap to apply calculated result including Limb Vol. and EFW to the report.</p>



5D Limb Vol.™

# 8. 5D Limb Vol.™ result in Report

**SAMSUNG MEDISON**

ID	IJ-C21	Name	27W	
Date of Birth(Age)		Gender		Exam Date 2021-09-14
Indication				
Diag. Physician	Ref. Physician	Operator		

**OB**

LMP	GA(Clin)	EDD(GA)	Gravida	Para
Composite GA Average	GA(AUA)	EDD(AUA)	Ectopic	Aborta
DOC	Ovulation Date			
EFW1	Lee1	BPD,AC,AVol	3527 g	(7lb 12oz) Williams
EFW2	Lee2	BPD,AC,TVol	2036 g	(4lb 8oz) 33w2d Williams

**Fetal Biometry**

		m1	m2	m3	GA	
BPD	16.53	16.53			cm	Last Asum(scw)
AC	37.53	37.53			cm	Last Asum(scw)
HC	38.11	38.11			cm	Last Asum(scw)
AVol	18.20	16.80	18.20		ml	Last
TVol	17.80	17.80			ml	Last

**2D Calculations**

HC/AC	1.02	( ~ )	Campbell
-------	------	-------	----------

1 Report

Limb volume and EFW(Estimated Fetal Weight) by obtained limb volume will be displayed.

- The features, options may not be commercially available in some countries.
- Sales and shipments are effective only after the approval by the regulatory affairs. Please contact your local sales representative for further details.
- This Quick guide does not include all of the details of instruction, for more detail, please refer to V series User Manual.
- Do not distribute this document to customers unless relevant regulatory and legal affairs officers approve such distribution.
- This User Quick Guide is based on V series V1.05.
- Disclaimer: Some Images in this content were obtained from other system.

**SAMSUNG MEDISON CO., LTD.**

© 2024 Samsung Medison All Rights Reserved.

Samsung Medison reserves the right to modify the design, packaging, specifications, and features shown herein, without prior notice or obligation.