

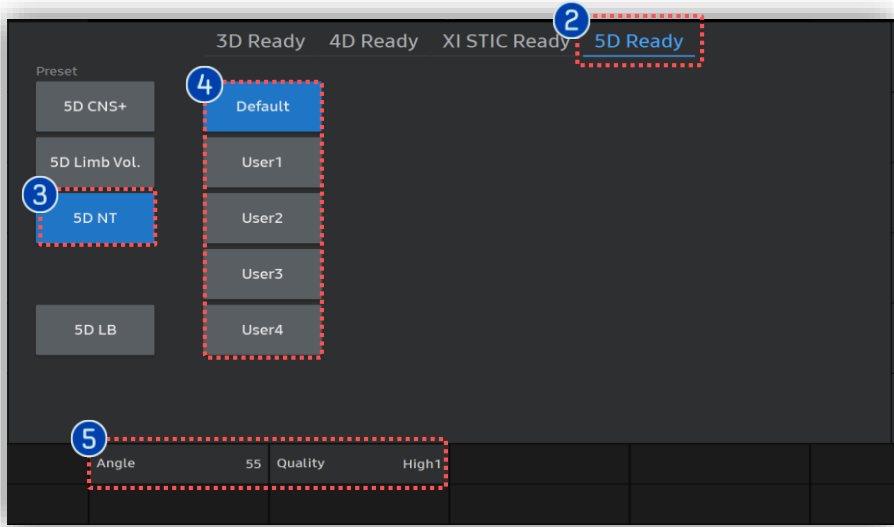
# 5D NT™

## V Series Quick Guide



5D NT™

# 1. Activate 5D NT™ (Before 3D Acquisition)



① 3D Button	Press [3D] button on the control panel.
② 5D Ready	Tap [5D Ready] on the touch panel.
③ 5D NT	Tap [5D NT] to activate 5D NT™.
④ Preset	Select preferred preset between default and users. Each 5D feature could have own preset parameters.
⑤ Parameters	[Angle] and [Quality] are customizable.
⑥ Volume acquisition	Find fetal NT on sagittal plane as clear as possible.

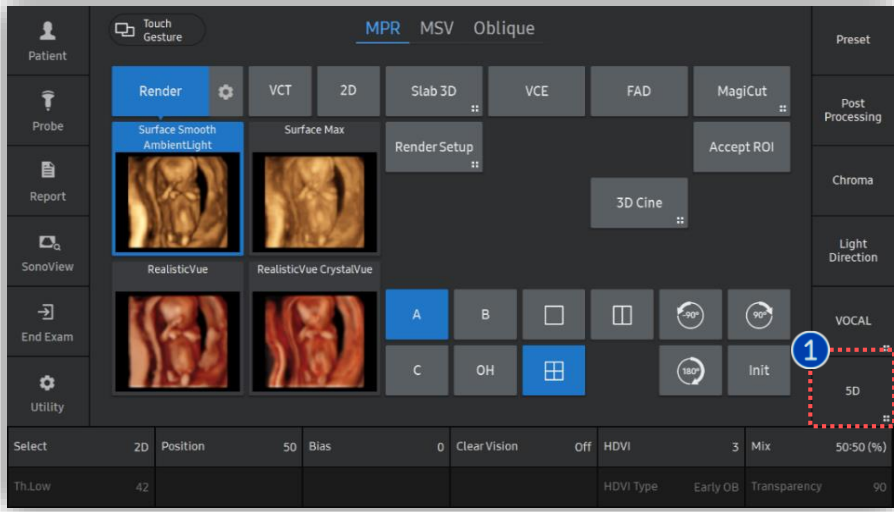


★Tips

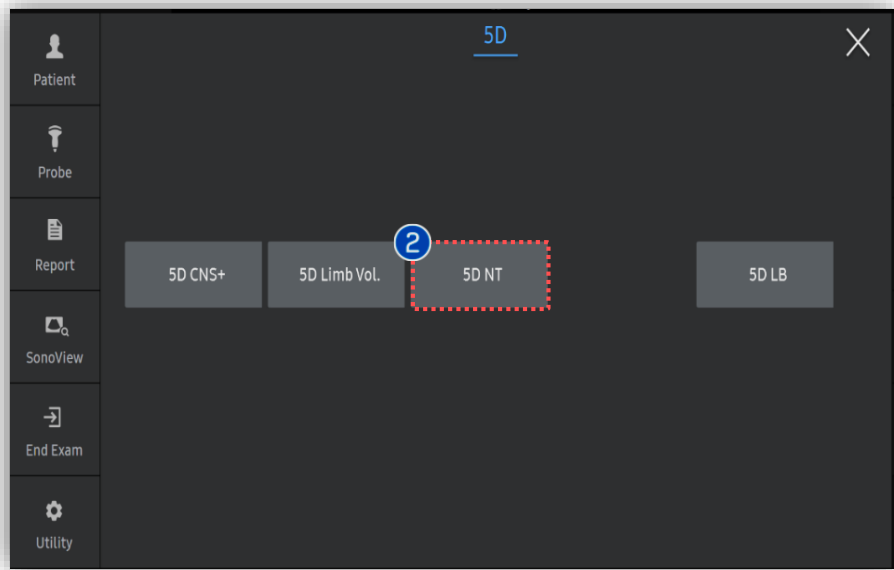
For more accurate NT evaluation, follow NT measurement guide-line created by FMF(Fetal Medicine Foundation).

5D NT™

# 2. Activate 5D NT™ (After 3D Acquisition)

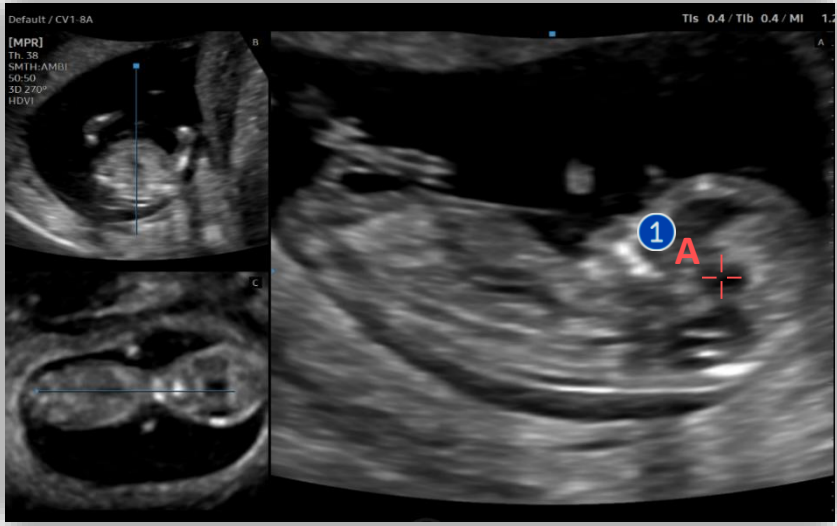


- 1 5D Tab to activate [5D] features.
- 2 5D NT Tab [5D NT] button to activate 5D NT™.



5D NT™

# 3. Set cursor at Diencephalon



- |                     |   |
|---------------------|---|
| <p>① Seed Point</p> | <p>Set [A] cursor on fetal <i>Diencephalon</i>. Then system automatically finds true mid-sagittal plane.</p>                |
| <p>② Auto</p>       | <p>In case of incorrect mid-sagittal plane, turn off [Auto] so that you will set the cursor on Diencephalon once again.</p> |

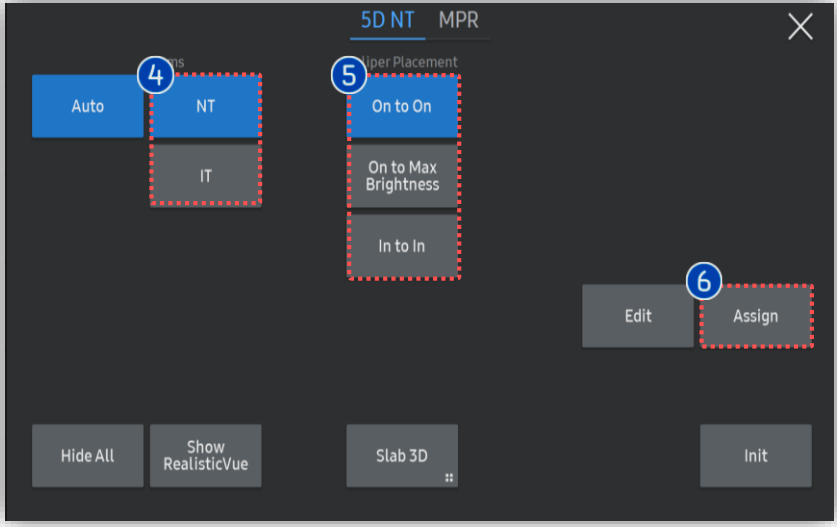
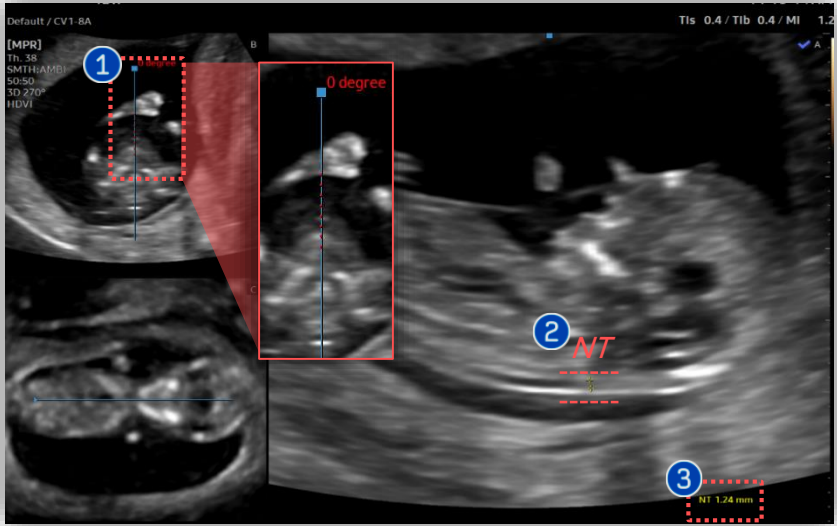


★ Tips

❖ Slab 3D  
 Slices of a 3D image will be displayed as images rendered in 3D. You may select [Slab 3D Type] among Surface, X-ray, Max and Min.

5D NT™

# 4. Measure NT or IT



① Angle	Angle difference from initial acquisition. <ul style="list-style-type: none"> <li>Blue Solid Line : MSP angle</li> <li>Red Dotted Line : Initially acquired angle</li> </ul>
② Caliper Set	Place caliper on fetal NT or IT depending on selection of item.
③ Result	Measurement result at the maximum distance of NT or IT.
④ Item	Select type of item between NT and IT
⑤ Caliper Placement	Select type of caliper placement among 'On to On', 'On to Max Brightness', and 'In to In'.
⑥ Assign	Tap to apply calculated result to the report.

- The features, options may not be commercially available in some countries.
- Sales and shipments are effective only after the approval by the regulatory affairs. Please contact your local sales representative for further details.
- This Quick guide does not include all of the details of instruction, for more detail, please refer to V series User Manual.
- Do not distribute this document to customers unless relevant regulatory and legal affairs officers approve such distribution.
- This User Quick Guide is based on V series V1.05.
- Disclaimer: Some Images in this content were obtained from other system.

**SAMSUNG MEDISON CO., LTD.**

© 2024 Samsung Medison All Rights Reserved.

Samsung Medison reserves the right to modify the design, packaging, specifications, and features shown herein, without prior notice or obligation.