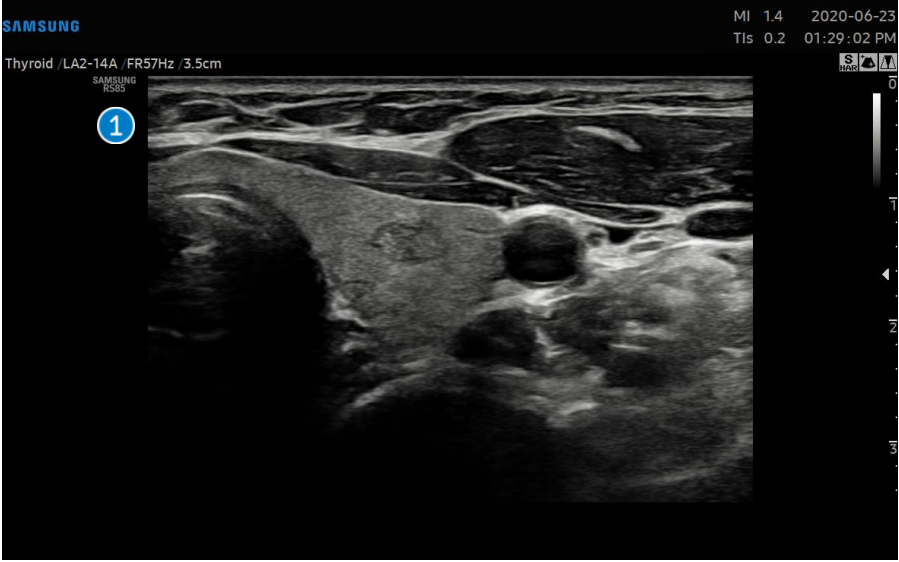


E-Thyroid™

RS85 Prestige Quick Guide



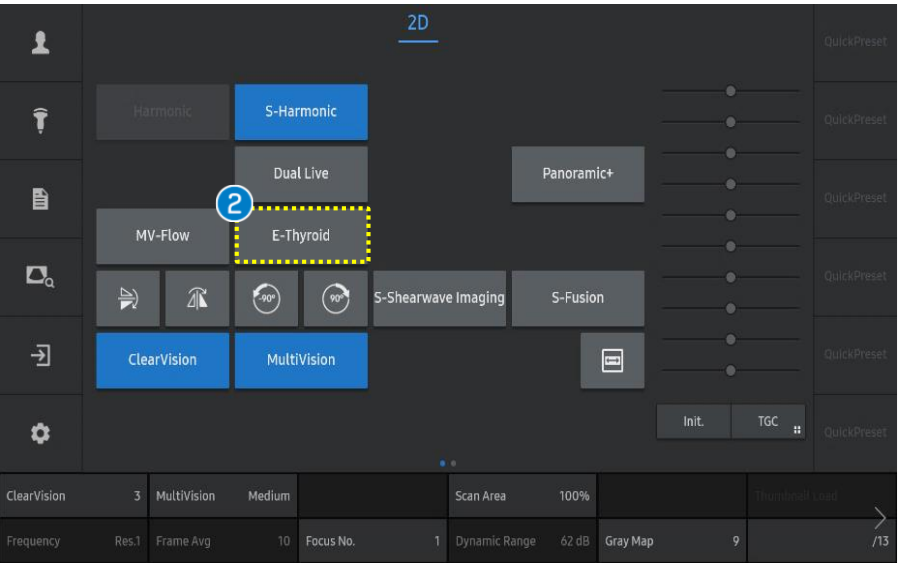
1. Start E-Thyroid™ (1)



1 Scan Scan the transverse image of thyroid gland.

Notes

To get more accurate result of E-Thyroid™, the transverse scan is recommended.

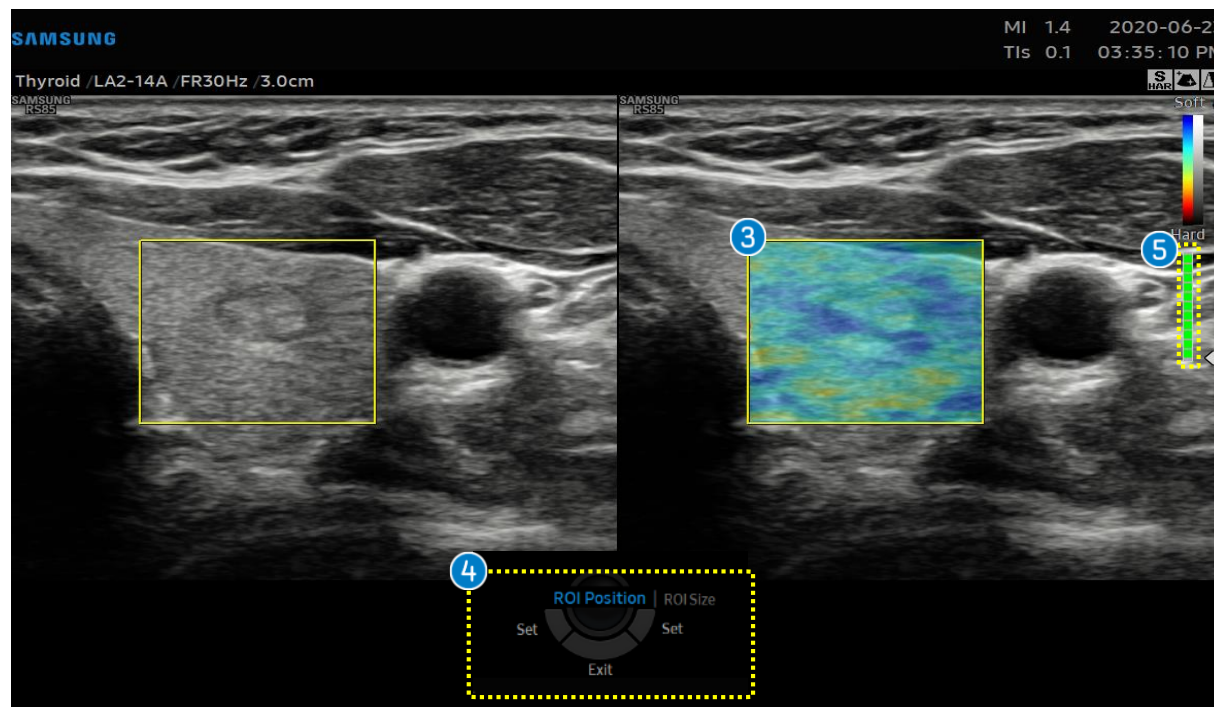


2 E-Thyroid Tap the [E-Thyroid] on the touch screen.

Notes

E-Thyroid™ does not need external compression with transducer since it utilizes pulsations from the carotid artery as a compression source.

1. Start E-Thyroid™ (2)



3 ROI Box

Place the ROI box over the suspicious lesion.

4 ROI Position & ROI Size

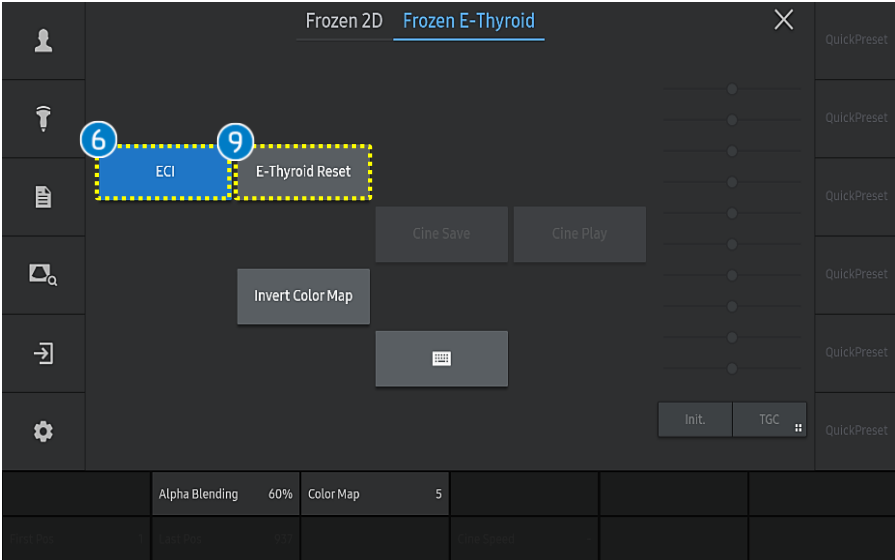
Adjust the position and size of the ROI box using the trackball.

5 Motion guide bar

- Hold the transducer until the motion guide bar turns completely green.
For more accurate results, the patient should suspend breathing to prevent extraneous movements for 3-4 seconds.
- When acquiring the strain data, refer to the [Motion guide bar] on the right top.
The level of motion is represented by colors. (Green: steady/ Yellow, Orange or Red: excessive motion)



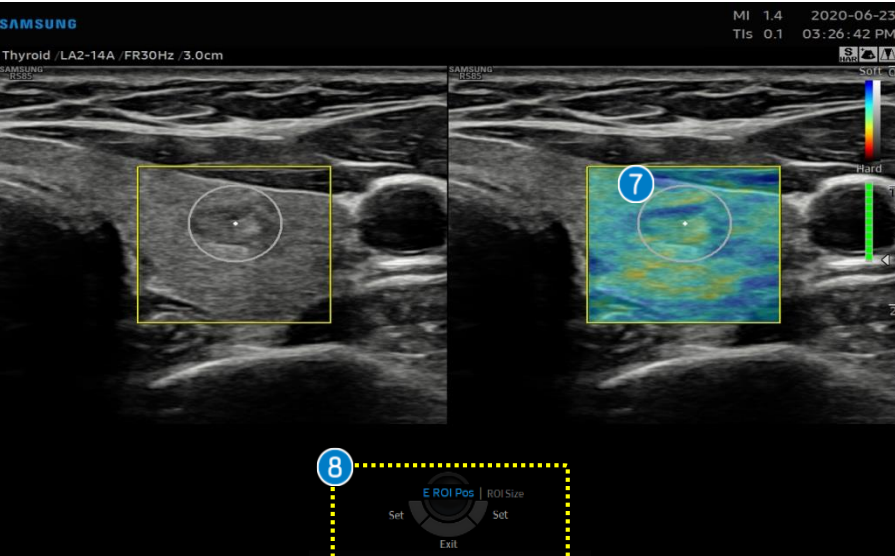
3. Perform ECI (1)



6 ECI After freezing the image, the [ECI] button will appear on the touch screen.

Notes

ECI(Elasticity Contrast Index) represents how much heterogeneity or homogeneity is inside of the selected area within ROI box. The ECI score is calculated from the strain map to quantify the local stiffness contrast within this area (i.e. the thyroid nodule).

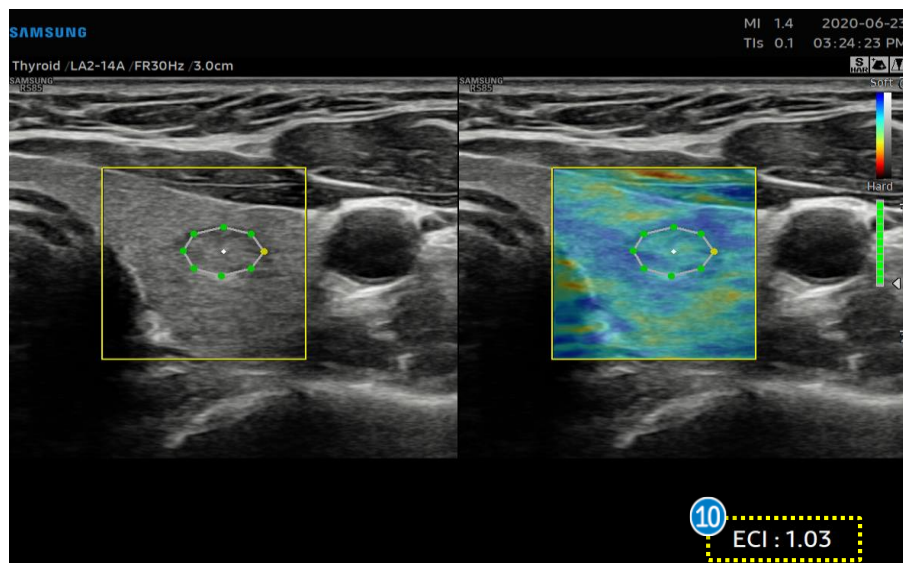


7 ECI ROI Put the ROI on the suspicious area.

8 ECI ROI Position & Size Adjust the size or location of the ROI using trackball.

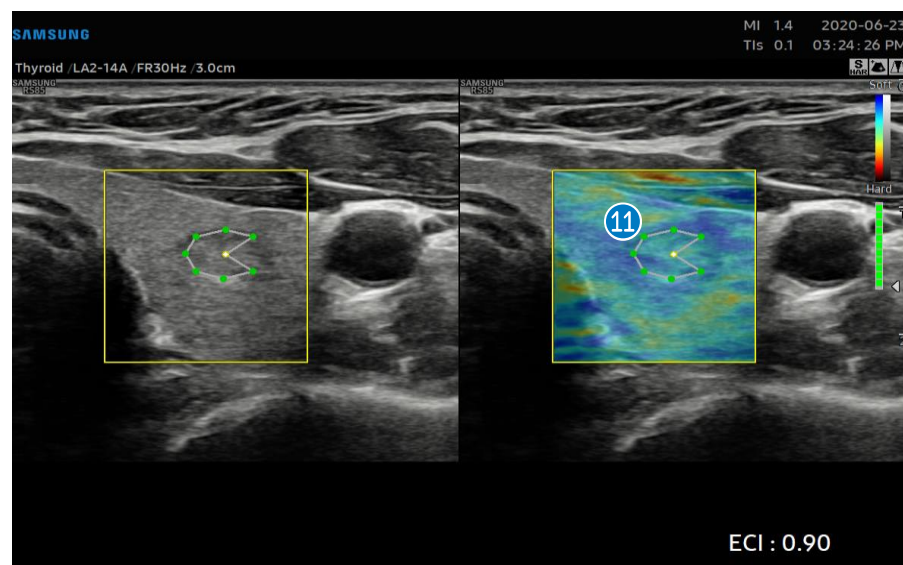
9 E-Thyroid Reset Tap the [E-Thyroid Reset] button on the touch screen to reset the measured the E-Thyroid results.

3. Perform ECI (2)



After pressing the [Set] button, the ECI (Elasticity Contrast Index) will be calculated and the results will be displayed on the bottom of the display monitor.

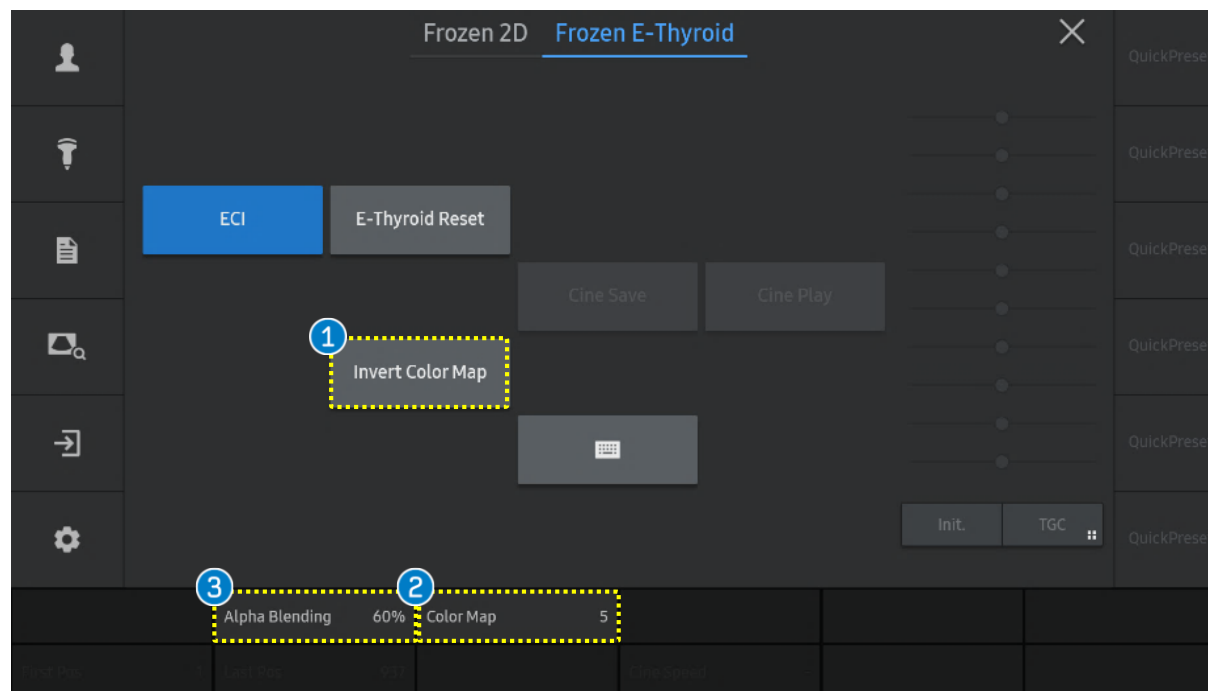
10 ECI



When the cursor covers over each point of the ROI, the color of corresponding point will be changed to yellow and become editable. Press the [Set] to modify the point, the ECI result will be updated.

11 Modify

4. Adjust parameters



1 Invert Color Map

To reverse the color map, tap the [Invert Color Map] button on the touch screen.

2 Color Map Index

The color bar represents the tissue stiffness. There are different color maps that can be selected.

3 Alpha Blending

Select the ratio of Blending. Tap the [Alpha Blending] button on the touch screen or use the corresponding dial button to select a value from 0% to 100%. Setting the value to 0% will display only the Elastography image. Setting the value to 100% will display only the 2D image.

SAMSUNG

- The features, options may not be commercially available in some countries.
- Sales and shipments are effective only after the approval by the regulatory affairs. Please contact your local sales representative for further details.
- This Quick guide does not include all of the details of instruction, for more detail, please refer to RS85 User Manual.
- Do not distribute this document to customers unless relevant regulatory and legal affairs officers approve such distribution.
- This User Quick Guide is based on RS85 V2.08.
- Disclaimer: Some Images in this content were obtained from other system.

SAMSUNG MEDISON CO., LTD.

© 2024 Samsung Medison All Rights Reserved.

Samsung Medison reserves the right to modify the design, packaging, specifications, and features shown herein, without prior notice or obligation.