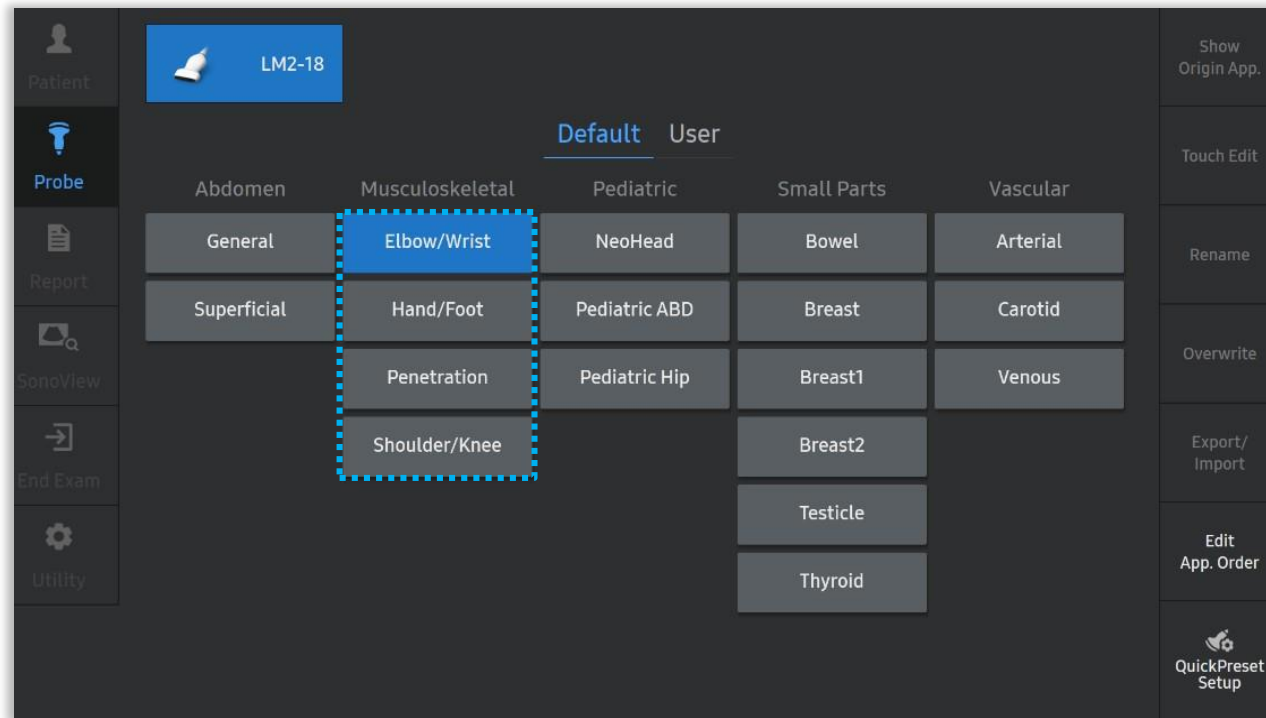


NerveTrack™ & EzNerveMeasure™

RS85 Prestige Quick Guide



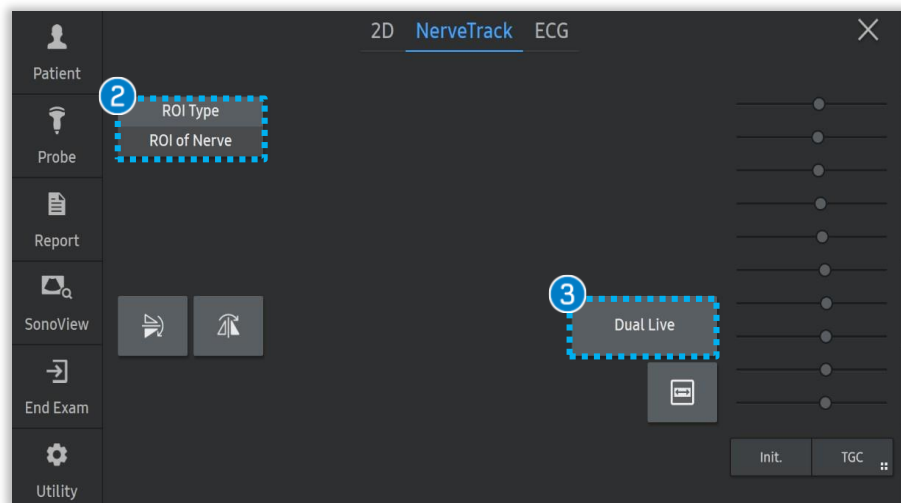
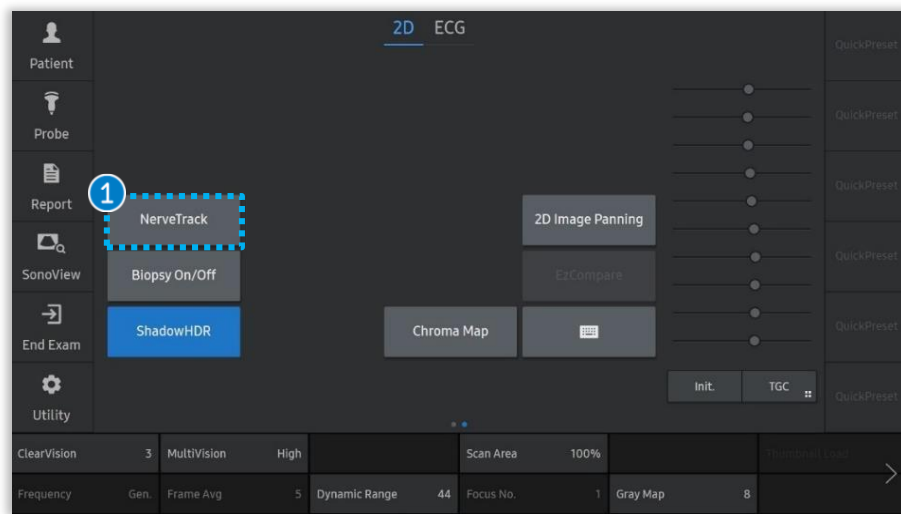
1. Probe and Preset



※ Available application and preset

Probe	All Linear Probe
Application	Musculoskeletal

2. Start NerveTrack™

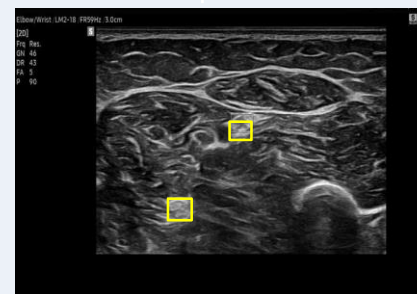


1 NerveTrack™

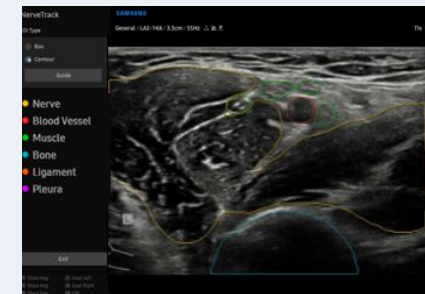
Select the NerveTrack™ button on the touch screen.
※ [NerveTrack] ON status can be saved on User preset, to run it automatically with a specific preset.

2 ROI Type

Change the ROI Type to the 'ROI of Nerve' from the 'Segmentation'.



<ROI of Nerve>



<Segmentation>

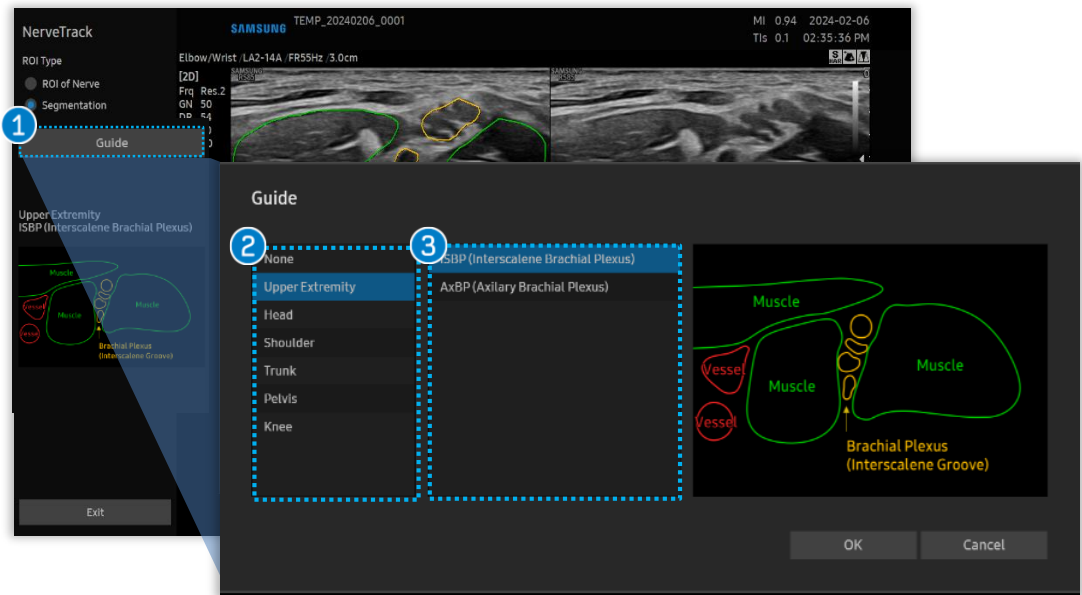
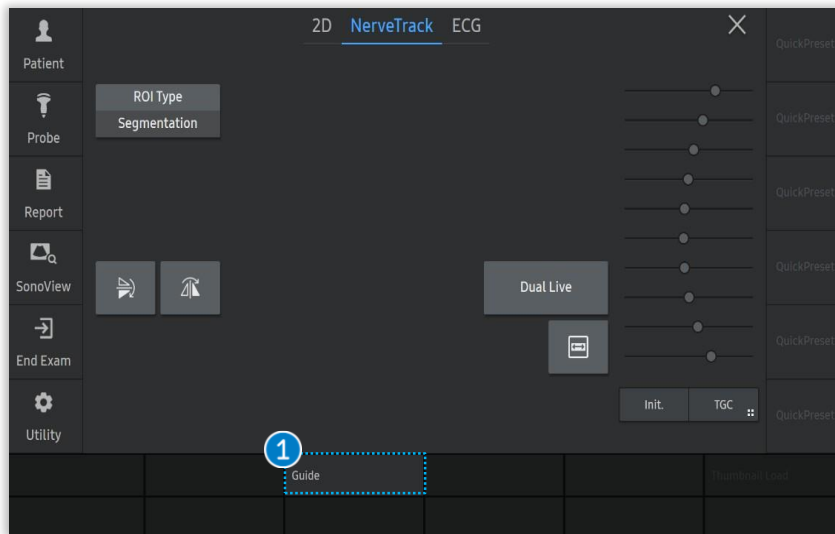
3 Dual Live

Displays B-Mode and NerveTrack™ Simultaneously with dual layout.

Note

※ Available with NerveTrack™

- Imaging mode : B-Mode, Color, PD Mode
- Image Layout : Single/Dual Mode, Trapezoidal Mode
- Available Tools : Annotation, BodyMarker, Measurement, Caliper
- MSK dedicated features that can along with: ShadowHDR™, HQ-Vision™



1 Guide

- a. Rotate the toggle key of Control Panel to display the Guide map at left window.
 ※ Various type of guide can be displayed on there with the knob key rotation.

2 Upper Extremity

3

- b. To see the preview, Click the [Guide] button on the Left Window. Select the structure, and Click [OK] button to display.

Upper Extremity

ISBP (Interscalene Brachial Plexus), AxBP (Axillary Brachial Plexus)

Head

GON (Greater Occipital Nerve)

Shoulder

SSN (Suprascapular Nerve)

Trunk

ICN (Intercostal Nerve)

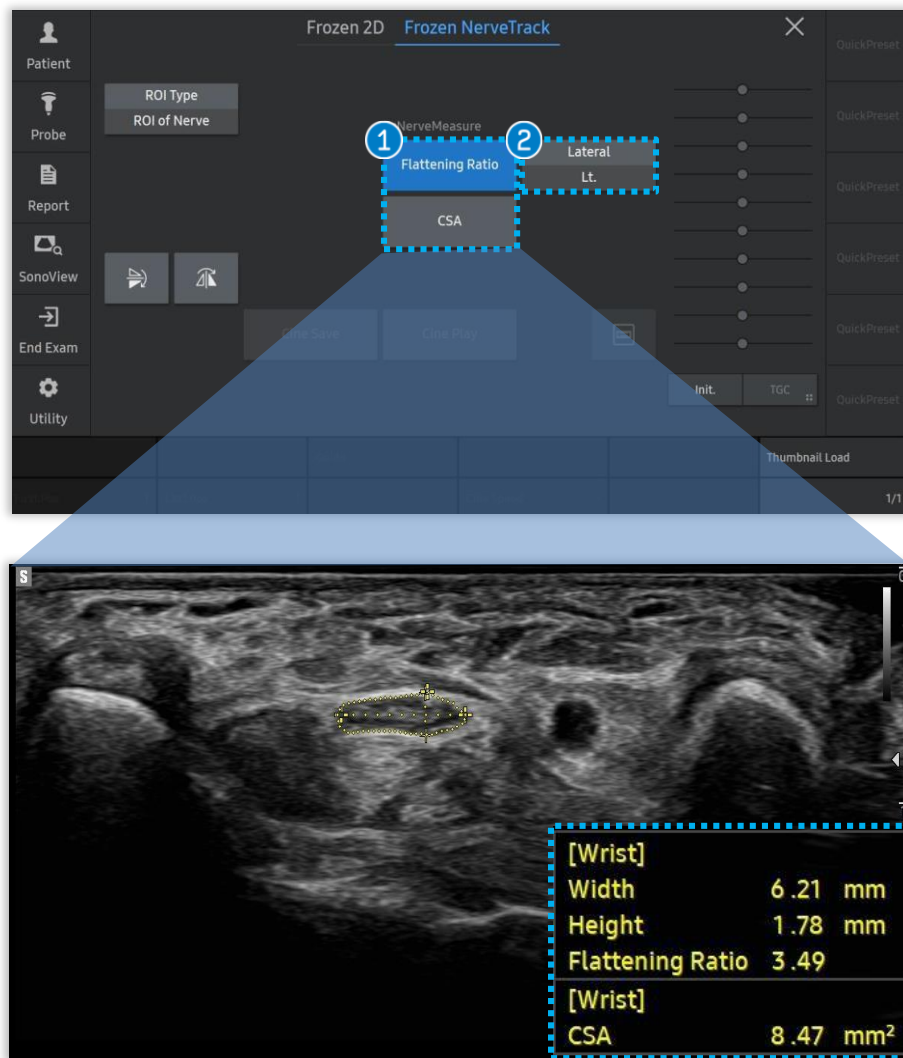
Pelvis

LFCN (Lateral Femoral Cutaneous Nerve)

Knee

SLGN (Superior Lateral Genicular Nerve), SMGN (Superior Medial Genicular Nerve), IMGN (Inferior Medial Genicular Nerve)

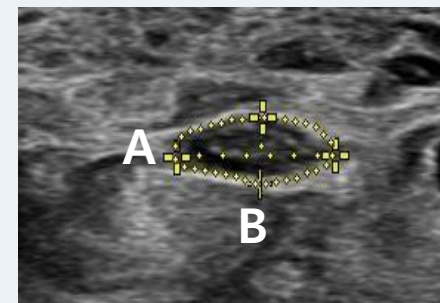
4. Start EzNerveMeasure™



1 EzNerveMeasure

Select the Measurement, [Flattening Ratio] or [CSA].

※ Measurement will be automatically processed, press the [Change] button of the Control Panel to revise the cursor. Confirm your measure with [Set] button



EzNerveMeasure™ : Median Nerve

- Flattening Ratio:** A/B , Calculated by dividing the span of the long axis by that of the short axis of the median nerve at around the pisiform level.
- CSA(Cross-Sectional Area):** The Area of the Median Nerve at the Wrist.

2 Lateral

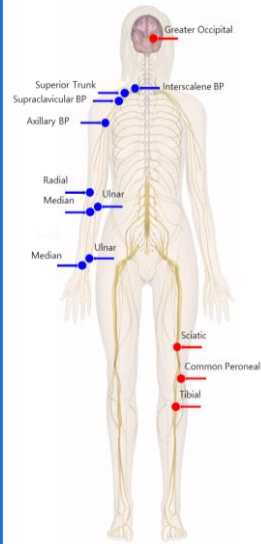
Assign the laterality by tapping [Lateral] button :
Rt. Lt. N/A

Note

- Only Available in 'ROI of Nerve'.
- Measure result will be assigned to the Report Page.

5. Appendix

[ROI of Nerve]



Location	Target Nerve
Head	Greater Occipital Nerve (GON)
Upper Extremity	Interscalene Brachial Plexus (ISBP), Axillary Brachial Plexus (AxBP), Superior Trunk(ST), Supraclavicular Brachial Plexus(SCBP),
Wrist	Median Nerve (MN), Ulnar Nerve (UN)
Elbow	Median Nerve (MN) Ulnar Nerve (UN) Radial Nerve (RN)
Lower Extremity	Sciatic Nerve (SN) Common Peroneal Nerve (CPN) Tibial Nerve (TN)

[Segmentation]



Location	Target Nerve
Head	Greater Occipital Nerve (GON)
Upper Extremity	Interscalene Brachial Plexus (ISBP), Axillary Brachial Plexus (AxBP)
Shoulder	Suprascapular Nerve (SSN)
Trunk	Intercostal Nerve (ICN)
Lower Extremity	Lateral Femoral Cutaneous Nerve (LFCN) Superior Lateral Genicular Nerve (SLGN) Superior Medial Genicular Nerve (SMGN) Inferior Medial Genicular Nerve (IMGN)

SAMSUNG

- The features, options may not be commercially available in some countries.
- Sales and shipments are effective only after the approval by the regulatory affairs. Please contact your local sales representative for further details.
- This Quick guide does not include all of the details of instruction, for more detail, please refer to RS85 User Manual.
- Do not distribute this document to customers unless relevant regulatory and legal affairs officers approve such distribution.
- This User Quick Guide is based on RS85 V2.08.
- Disclaimer: Some Images in this content were obtained from other system.

SAMSUNG MEDISON CO., LTD.

© 2024 Samsung Medison All Rights Reserved.

Samsung Medison reserves the right to modify the design, packaging, specifications, and features shown herein, without prior notice or obligation.